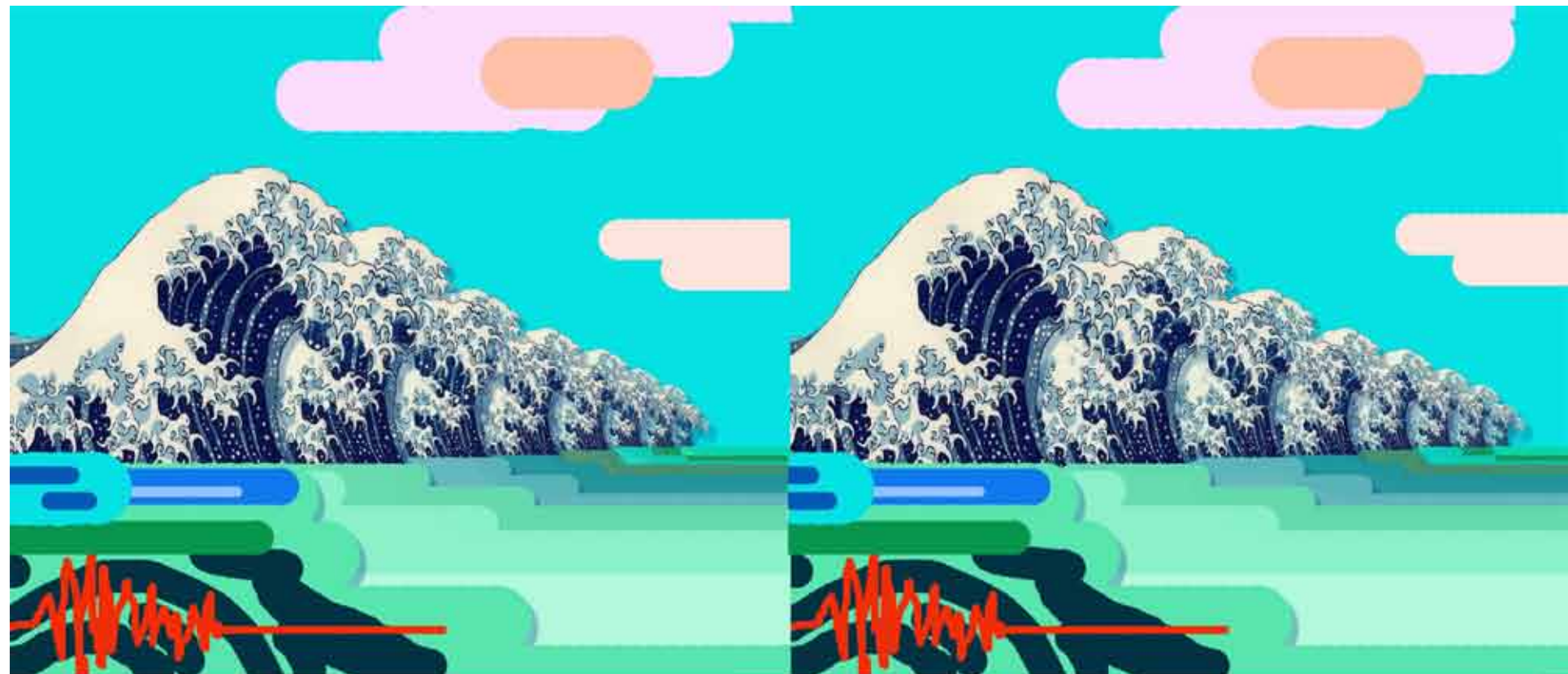


Impressions of My Experience of the Japan Disaster of March 11, 2011

Stereo graphics and text by Vladimir Tamari



STEREO WORLD EDITOR'S VIEW - John Dennis

"Impressions of the Japan Disaster of March 11, 2011" by Vladimir Tamari provides a stereo artists' treatment of a larger disaster 105 years later. Strangely, the San Francisco [earthquake of 1906] story was covered by stereographers from around the world, producing enough views to fill books. But in an age of digital stereo cameras proliferating everywhere we've seen no stereographs yet from Japan, the home of Fuji 3-D cameras. It seems to have been a massive event covered almost exclusively with cell phone cameras. Living far from the most affected areas, Vladimir Tamari created stereo paintings to convey his impressions from Tokyo and paired frames from television coverage of the tsunami. One of these lets the advancing wave paint its own somewhat abstract stereo effect in successive frames. The other allows the water and floating cars and debris to fuse in sheer chaos, reflecting in a sort of anti-stereo, the effects of the images on the nation's viewers. For more about the artist and his stereo drawing machines see Stereo World Vol. 31 No.5 page 16, or www.ne.jp/asahi/tamari/vladimir

When the great earthquake struck I was in a small park between housing in Tokyo, fiddling with my ipod touch. The ground shook violently and I held onto a tree for support. I felt scared and desolate, and tried to take a video of the swaying trees, but I only managed to shoot a fuzzy still image of the ground. Apart from a few items that fell to the ground no physical damage was experienced in our part of Japan. The next day I went to a library and a little girl was staring in such a way that reminded me of the iconic graphic for «Les Miserables» musical. Her calm gaze inspired courage, and I drew her (normally, in 2D) using an ipod painting app. A month later, the news of the human and nuclear disasters and the frequent aftershocks is something that continues to be of concern but the calm practical courage and resilience of the Japanese people is something we can all learn from.

Notes on the illustrations: The tsunami TV news stereos were made using time-lapse frames from a video downloaded from youtube. The horizontal flow of the cars and houses swept away made a false-stereoscopic effect possible. The stereo-photo of the crumpled Asahi newspaper features the famous photo of the woman grieving for her destroyed world. My panel of three stereo-graphics was mainly created in Photoshop starting with an adaptation of Hokusai's famous print of an earlier tsunami. The wave was reduced in size and Below that is a 3D version of a watercolor I made the day after the earthquake. The photo of the painting in the left panel was sectioned and copied to layers in the right panel where small horizontal shifts created the depth of each layer.

In the bottom image the ipod drawing of the girl was made into a stereo-pair using a different technique in Illustrator. The drawing was copied to the right panel Object/Envelope Distort/Reset With Mesh. Selected point ion the mesh, that on the nose for example was moved horizontally using the arrow key to raise the area. other points were shifted to lower them. I did all the above adjustments while free-fusing the images, so that I could see the changes in real time.